



S3 Scanner only Loss and Damage Charge (Europe)

This fee covers the loss or repair of the complete Scanner equipment. In the event of loss or damage, the Scanner Lease Holder will only be required to pay a maximum amount of GBP 416.67 and not the full price of the equipment.

PRICES EXCL. VAT: GBP 416.67



Single S3 Scanner Charge (Europe):

This fee applies when the Scanner Lease Holder cannot benefit anymore from the Loss and Damage Waiver and the Scanner is lost or damaged. In this case, the Scanner Lease Holder must pay the full price of the Scanner. This applies also when the Scanner Lease Holder returns the equipment, and the Scanner is missing or broken.

PRICES EXCL. VAT: GBP 1,640.00



S3 Power Supply Part Charge (Europe):

This fee is required when only the Scanner power supply is lost or damaged. In this case, the Scanner Lease Holder must pay the full price of the Scanner power supply. This applies also when the Scanner Lease Holder returns the equipment and the Scanner power supply is missing or damaged.

PRICES EXCL. VAT: GBP 6.67



S3 Dark Cap Part Charge (Europe):

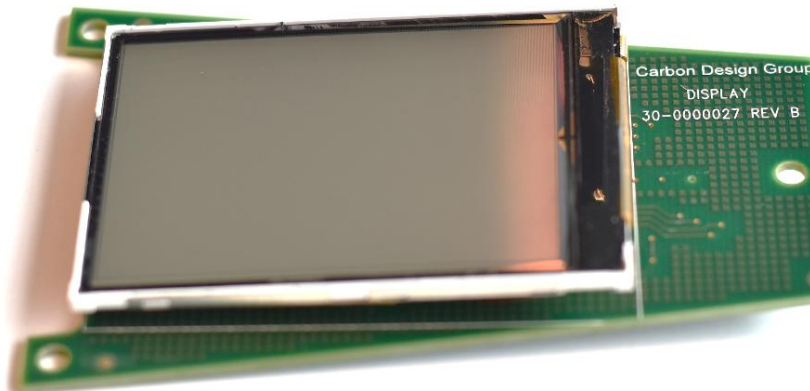
This fee is required when the dark cap gets lost or broken. In this case, the Scanner Lease Holder must pay the full price of the dark cap. This applies also when the Scanner Lease Holder returns the equipment and the dark cap is missing or damaged.

PRICES EXCL. VAT: GBP 2.5

S3 Display Screen Repair/Change (Europe):

This fee is required when the Scanner display screen is damaged or broken. In this case, the Scanner Lease Holder must pay the full price of the Scanner display screen. This applies also when the Scanner Lease Holder returns the equipment and the Scanner's display screen is broken.

PRICES EXCL. VAT: GBP 202.37





Shell Repair/Change (Europe):

This fee is required when the Scanner's upper part - the so - called shell - is damaged or broken. In this case, the Scanner Lease Holder must pay the full price of the Scanner's shell. This applies also when the Scanner Lease Holder returns the equipment and the Scanner's shell is broken or damaged.

PRICES EXCL. VAT: GBP 40.47



Bottom Base Repair/Change (Europe):

This fee is required when the Scanner's bottom base is damaged or broken. In this case, the Scanner Lease Holder must pay the full price of the Scanner's bottom base. This applies also when the Scanner Lease Holder returns the equipment and the Scanner's bottom base is broken or damaged.

PRICES EXCL. VAT: GBP 16.19



Battery Repair/Change (Europe):

This fee is required when the Scanner's battery should be replaced or is broken. In this case, the Scanner Lease Holder must pay the full price of the battery. This applies also when the Scanner Lease Holder returns the equipment and the Scanner's battery is broken or lost.

PRICES EXCL. VAT: GBP 36.43



Repair Service Fee (Europe):

This fee applies when any of the Scanner's part is damaged or lost and the Scanner should be repaired at Budapest Service Centre.

PRICES EXCL. VAT: GBP 40.47

